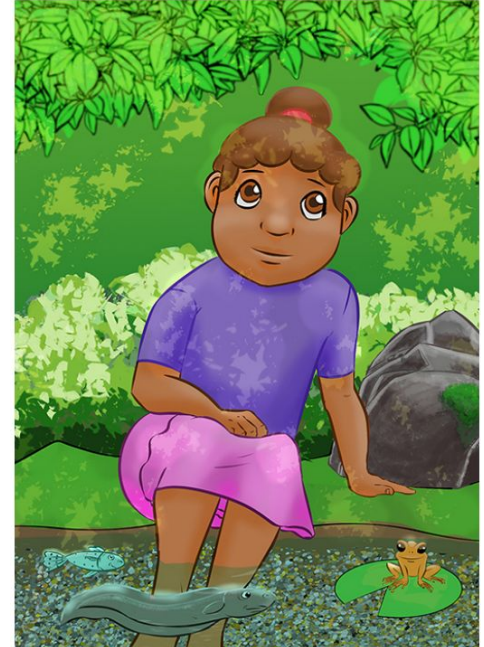


Forest Friends

Text Type: Narrative

Source: www.letsreadasia.org

Outcome: Building Vocabulary and Reading Comprehension



Pacific
Community
Communauté
du Pacifique

Orientation

Tips to help teach the orientation of a book:

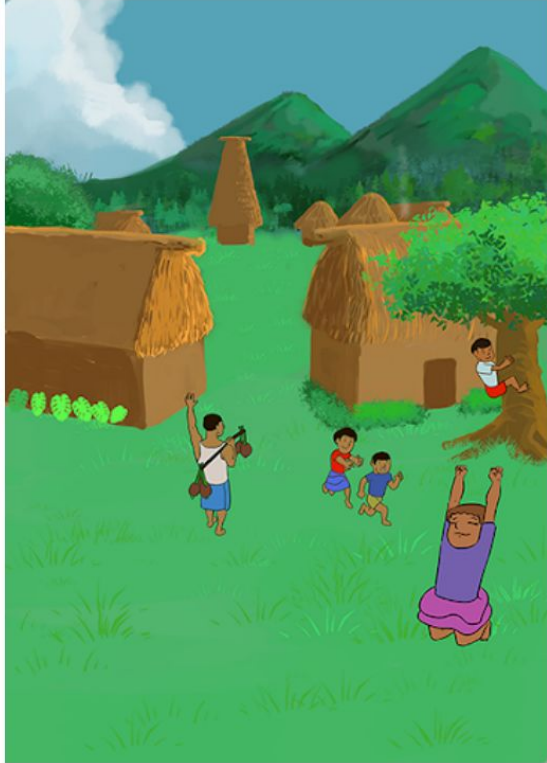
- introduce the title
- introduce the author
- discuss what you notice in the picture - “I notice...”

“I can see...”

- use the clues to make a prediction - “I predict...”
- model asking questions - “I am wondering...”

Forest Friends

Author: Dhruvkaran Nand



Tina is a seven-year-old girl.

**She lives in a happy village
named Purple Cherry.**

**It is next to a beautiful
forest.**

**There is also a clear,
sparkling stream.**

Tina loves to play there with her forest friends.

Forest Friends

Author: Dhruvkaran Nand



**One afternoon, a fire blazes
through the forest.**

Brave villagers battle the roaring flames for hours.

Finally, they put it out.

**The tired people go home
as the day gets dark.**

Orientation

Don't forget to:

- spend time discussing the text before you start reading
- use think alouds - “I wonder...” “I am thinking” when teaching the orientation of the book.

Thank You for watching PILNA TV

**Don't forget you can access
Forest Friends for your class at
www.letsreadasia.org**

Next Episode: Building Vocabulary



Pacific
Community
Communauté
du Pacifique

Building Vocabulary to Enhance Reading Comprehension

In this video we are using **synonyms** to build the students' vocabulary.



Pacific
Community
Communauté
du Pacifique

Vocabulary



One afternoon, a fire **blazes**
through the forest.

bursts

Brave **villagers** battle the **roaring** flames for
hours.

locals

Finally, they put it out.

booming

The tired people go home
as the day gets dark.

Synonyms

Word	Synonyms
<p>blazes rootword: blaze A strong, rushing fire</p>	<p>burst rush outbreak</p>
<p>villagers rootword: village The people who live in the village</p>	<p>locals residents</p>
<p>roaring rootword: roar A loud, booming sound</p>	<p>booming deafening thundering</p>

Building Vocabulary to Enhance Reading Comprehension

Don't forget:

- to reread the sentence or text with the synonyms
- the aim is to build strategies to clarify the meaning of words
- these activities can replace using a dictionary.



Pacific
Community
Communauté
du Pacifique

Thank You for watching PILNA TV

**Don't forget you can access
Forest Friends for your class at
www.letsreadasia.org**

Next Episode: Reading Comprehension



Pacific
Community
Communauté
du Pacifique

Forest Friends

Reading Comprehension:

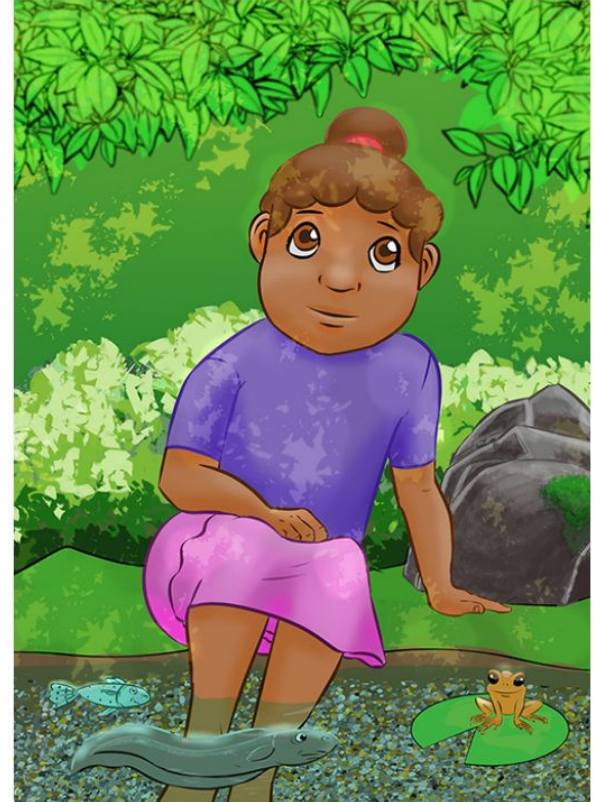
Locating information

Intrepreting information

Critical Thinking



Pacific
Community
Communauté
du Pacifique



Reading Comprehension

Tips to help teach reading comprehension:

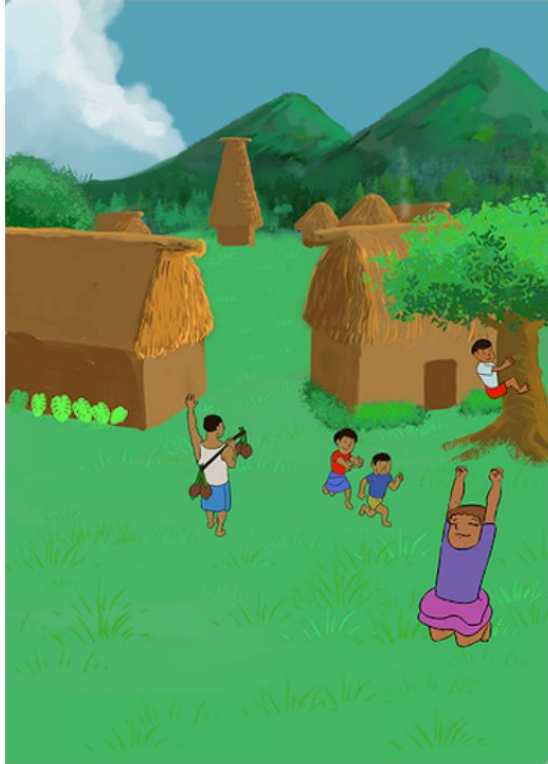
- read the questions and identify ***key words***
- ***locate*** the key words in the text
- model the importance of ***rereading*** the text.



Pacific
Community
Communauté
du Pacifique

Locating Information

Question One: What would you find at Purple Cherry village?



Tina is a seven-year-old girl.

**She lives in a happy village
named Purple Cherry.**

It is next to a beautiful forest.

**There is also a clear,
sparkling stream.**

**Tina loves to play there with her forest
friends.**

Interpreting Information

Question Two: Why are the villagers described as brave?



**One afternoon, a fire blazes
through the forest.**

**Brave villagers battle the roaring flames for
hours.**

**Finally, they put it out.
The tired people go home
as the day gets dark.**

Critical Thinking

Question Three: How do you think the fire started?



**One afternoon, a fire blazes
through the forest.**

**Brave villagers battle the roaring flames for
hours.**

Finally, they put it out.

**The tired people go home
as the day gets dark.**

Reading Comprehension

Don't forget:

- to reread the text multiple times
- to use a highlighter to locate key words
- to use think alouds to show the students how you answer the questions.



Pacific
Community
Communauté
du Pacifique

Thank You for watching PILNA TV

**Don't forget you can access
Forest Friends for your class at
www.letsreadasia.org**



Pacific
Community
Communauté
du Pacifique