

A Friend of a Friend

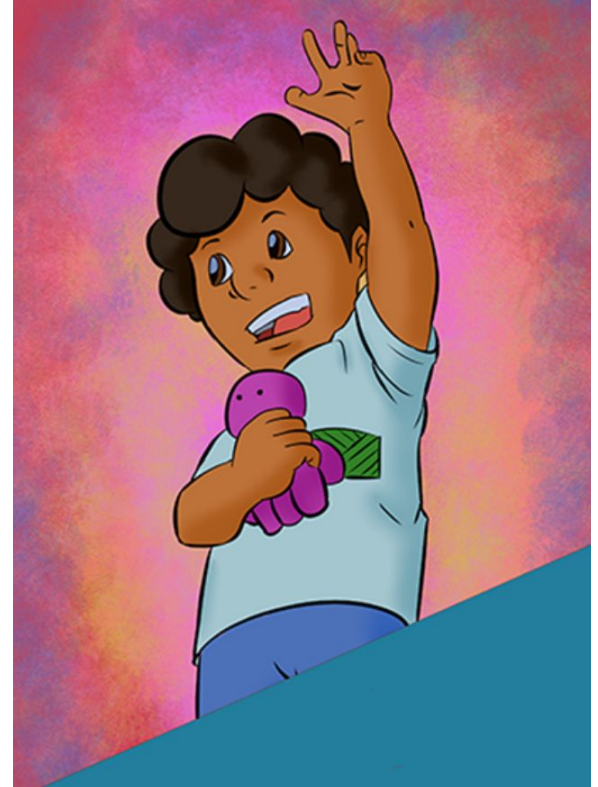
Text Type:

Narrative

Source: www.letsreadasia.org

Outcome:

Reading Comprehension



Pacific
Community
Communauté
du Pacifique

Orientation

Tips to help teach the orientation of a book:

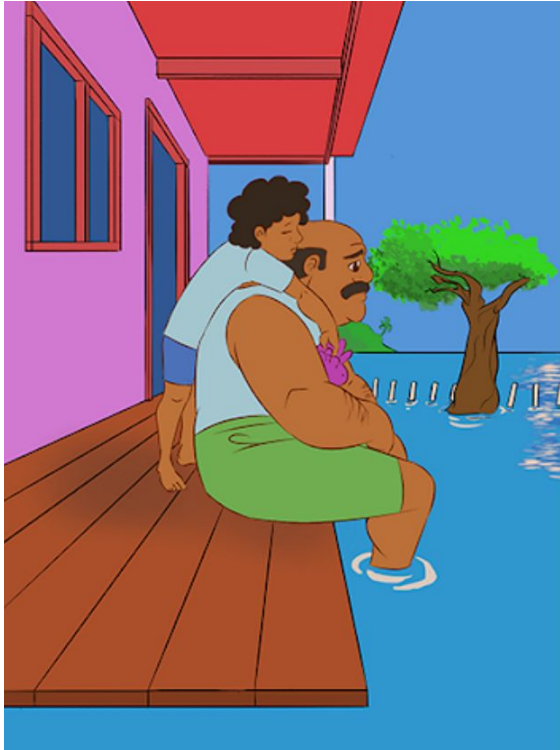
- introduce the title
- introduce the author
- discuss what you notice in the picture - “I can see...”
- model how to make a prediction based on the clues - “I predict...”



Pacific
Community
Communauté
du Pacifique

A Friend of a Friend

Author: Shailesh Lal



Mere leaned on her dad and wished things were different.

They were moving to the mountains across the road.

“The sea is slowly eating our land,” sighed Dad.

But Mere knew that the sea was not to blame.

The sea had told her so.

A Friend of a Friend

Author: Shailesh Lal



**Mere would miss her friends a lot.
Baam the electric eel who enjoyed
giving her a shock.**

**John the crab king who always beat
Mere in a sideways race.**

**And Ula the parrotfish who always
brought Mere the freshest, whitest sand
from goodness knows where. Yes, she
would miss these friends. Most of all,
she would miss the sea.**

Orientation

Don't forget to:

- spend time discussing the text before you start reading
- model different reading strategies such as making predictions or connections during the orientation.

Thank You for watching PILNA TV

**Don't forget you can access
A Friend of a Friend for your class at
www.letsreadasia.org**

Next Episode: Building Vocabulary



Pacific
Community
Communauté
du Pacifique

Building Vocabulary to Enhance Reading Comprehension

In this video we are focusing on ***clarifying*** the meaning of a phrase and unfamiliar words. We will use ***synonyms*** to build the understanding of words.



Pacific
Community
Communauté
du Pacifique

Vocabulary



Mere leaned on her dad and wished things were different.

They were moving to the mountains across the road.

“The sea is slowly eating our land,” sighed Dad.

But Mere knew that the sea was not to blame.

The sea had told her so.

Vocabulary Planner

Phrase/Word	Teaching Points
slowly eating our land	Explain that the sea level is rising and taking over the land. Refer to the visual to help the students understand - we can't see any land only water.
sighed	Text clues: the word sighed follows talking marks. Model how someone sighs (a deep breath before speaking)
blame to take responsibility for something wrong	Synonyms: fault guilty

Building Vocabulary to Enhance Reading Comprehension

Don't forget:

- to identify words or phrases before reading
- to research the identified phrase or words
- to create opportunities for students to use the words in different contexts.



Pacific
Community
Communauté
du Pacifique

Thank You for watching PILNA TV

**Don't forget you can access
A Friend of a Friend for your class at
www.letsreadasia.org**

Next Episode: Reading Comprehension



Pacific
Community
Communauté
du Pacifique

Reading Comprehension

Tips to help teach reading comprehension:

- read the questions and identify ***key words***
- ***locate*** the key words in the text
- model the importance of ***rereading*** the text.



Pacific
Community
Communauté
du Pacifique

Locating Information

Question One: What did Dad say to Mere?



Mere leaned on her dad and wished things were different.

They were moving to the mountains across the road.

“The sea is slowly eating our land,” sighed Dad.

But Mere knew that the sea was not to blame.

The sea had told her so.

Interpreting Information

Question Two: Why was Mere leaning on her Dad?



Mere leaned on her dad and wished things were different.

They were moving to the mountains across the road.

“The sea is slowly eating our land,” sighed Dad.

But Mere knew that the sea was not to blame.

The sea had told her so.

Critical thinking

Question Three: Do you think Mere will make friends easily when she moves? Why or why not?



Mere would miss her friends a lot.

Baam the electric eel who enjoyed giving her a shock.

John the crab king who always beat Mere in a sideways race.

And Ula the parrotfish who always brought Mere the freshest, whitest sand from goodness knows where.

Yes, she would miss these friends. Most of all, she would miss the sea.

Thank You for watching.

**Don't forget you can access
A Friend of a Friend for your class at
www.letsreadasia.org**



Pacific
Community
Communauté
du Pacifique